



WHITE HAWK | 2017



24MBH





#LETSJAYCO

Where do you want to go? With Jayco, you're headed straight for family fun—regardless of the destination. From wooded campgrounds to sandy beaches, swimming hole docks to scenic byways, maximize the moment with unmatched quality and added comfort. So what are you waiting for? Make new memories—and share them with the world.

GENERATIONS OF FAMILY FUN



WHITE HAWK

BROADEN YOUR HORIZONS

Enjoy twice the expandable space—and the peace of mind—that comes with the industry's sturdiest slideouts. The White Hawk features impressive 36-inch-wide, ram-style slideouts with vacuum-bonded walls, double-bulb seals and a U-channel drip spout over all openings.

Is your tow vehicle
WHITE HAWK ready?



Scan the QR code for complete towing guide resources





29REKS | TWILIGHT

A side-profile exterior view of the Jayco White Hawk travel trailer, showing its white body with dark graphics and the 'Jayco' logo on the front.

WHITE HAWK

Take your camping experience to new heights. Thoughtful floorplans and standard slideouts pack value and comfort in a strong, lightweight package.



24MBH MURPHY BED IN UP POSITION



24MBH MURPHY BED IN DOWN POSITION



24MBH OUTSIDE COOK CENTER



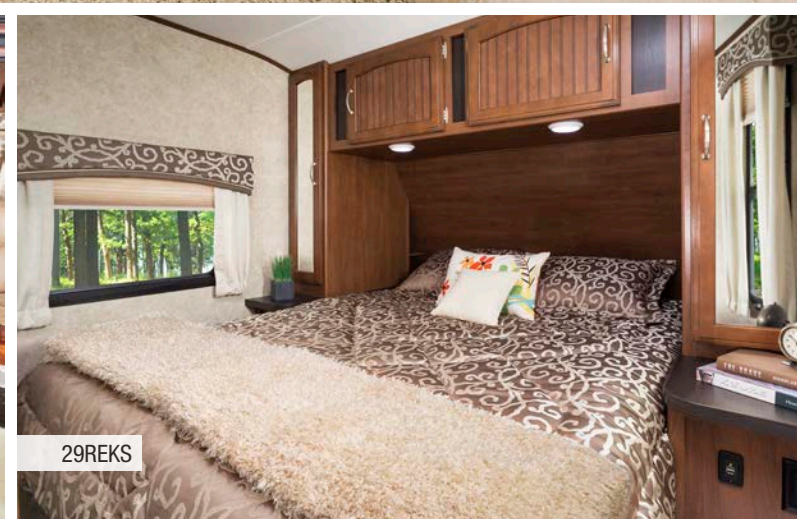
24MBH POWER AWNING WITH LED LIGHT



29REKS | TWILIGHT



29REKS



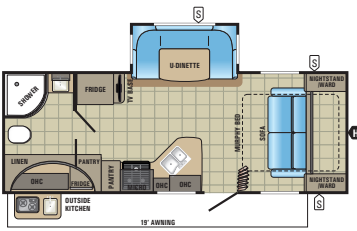
29REKS



29REKS CHIL N' STOR

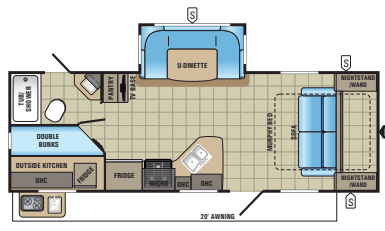


29REKS PASS-THROUGH PICNIC TABLE

**WHITE HAWK | 23MRB**

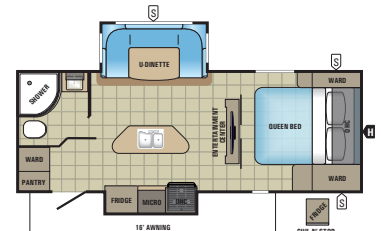
Ext. Lgth: 25' 11" Ext. Ht: 127"

Unloaded Wt (lbs.): 5,135 Sleeps: 2-4

**WHITE HAWK | 24MBH**

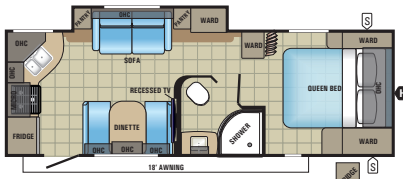
Ext. Lgth: 27' 9" Ext. Ht: 127"

Unloaded Wt (lbs.): 5,415 Sleeps: 6-8

**WHITE HAWK | 24RDB**

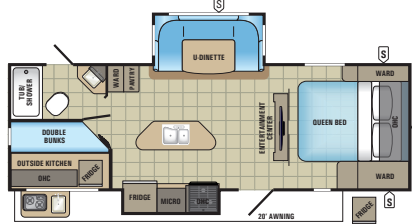
Ext. Lgth: 26' 10" Ext. Ht: 131"

Unloaded Wt (lbs.): 5,315 Sleeps: 3-4

**WHITE HAWK | 24RKS**

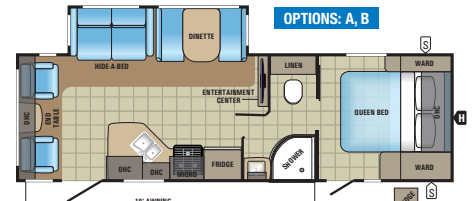
Ext. Lgth: 28' 9" Ext. Ht: 131"

Unloaded Wt (lbs.): 5,245 Sleeps: 4-6

**WHITE HAWK | 25BHS**

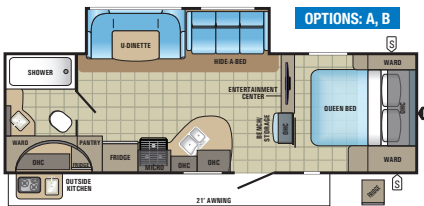
Ext. Lgth: 29' 5" Ext. Ht: 131"

Unloaded Wt (lbs.): 5,860 Sleeps: 7-8

**WHITE HAWK | 27DSRL**

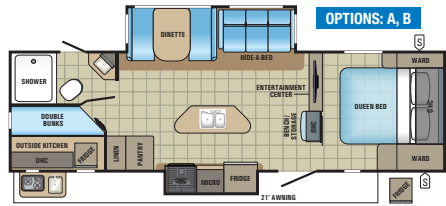
Ext. Lgth: 31' 5" Ext. Ht: 131"

Unloaded Wt (lbs.): 6,040 Sleeps: 2-6

**WHITE HAWK | 27RBOK**

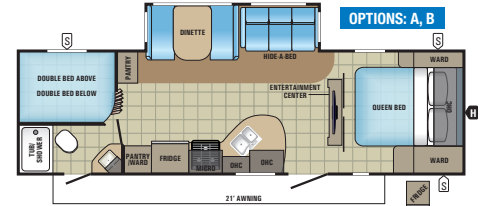
Ext. Lgth: 31' 5" Ext. Ht: 131"

Unloaded Wt (lbs.): 6,010 Sleeps: 2-6

**WHITE HAWK | 28BHK**

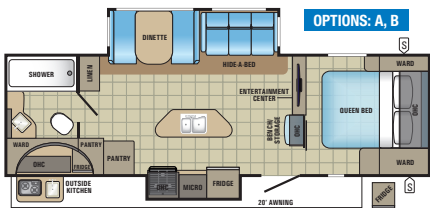
Ext. Lgth: 32' 11" Ext. Ht: 135"

Unloaded Wt (lbs.): 6,675 Sleeps: 6-9

**WHITE HAWK | 28DSBH**

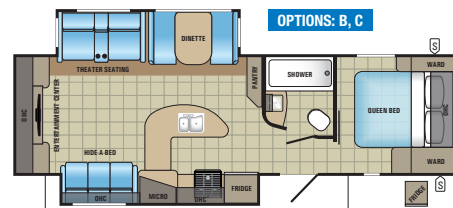
Ext. Lgth: 32' 9" Ext. Ht: 131"

Unloaded Wt (lbs.): 6,115 Sleeps: 6-9

**WHITE HAWK | 28RBKS**

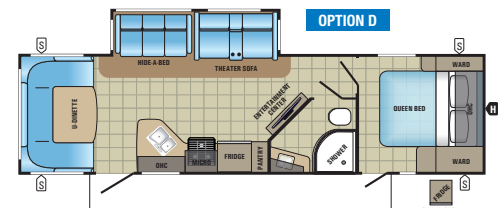
Ext. Lgth: 31' 11" Ext. Ht: 131"

Unloaded Wt (lbs.): 6,285 Sleeps: 2-5

**WHITE HAWK | 29REKS**

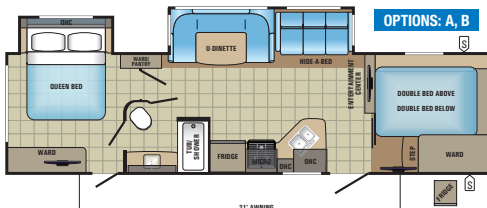
Ext. Lgth: 33' 9" Ext. Ht: 134"

Unloaded Wt (lbs.): 6,965 Sleeps: 4-6

**WHITE HAWK | 30RDS**

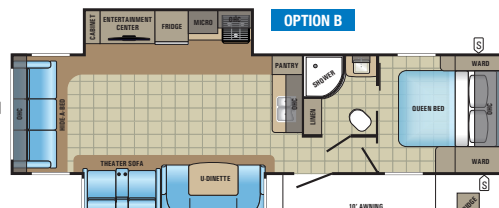
Ext. Lgth: 35' 3" Ext. Ht: 134"

Unloaded Wt (lbs.): 6,620 Sleeps: 5-6

**WHITE HAWK | 31BHS**

Ext. Lgth: 35' 11" Ext. Ht: 134"

Unloaded Wt (lbs.): 7,150 Sleeps: 4-8

**WHITE HAWK | 31RLKS**

Ext. Lgth: 36' 11" Ext. Ht: 136"

Unloaded Wt (lbs.): 7,435 Sleeps: 4-6

OPTIONS:**OPTION A****OPTION B****OPTION C****OPTION D****FLOORPLAN LEGEND:**

STORAGE	OVERHEAD CABINETS
TRAILER HITCH	FRIDGE REFRIGERATOR
MICRO MICROWAVE	WARD WARDROBE

SPECS

MODELS		DIMENSIONS			WEIGHT (LBS.)				TANKS (GALS.)		
FLOORPLAN	EXTERIOR TRAVEL LENGTH	EXTERIOR WIDTH	EXTERIOR HEIGHT WITH A/C	INTERIOR HEIGHT	UNLOADED VEHICLE WEIGHT	DRY HITCH WEIGHT	GROSS VEHICLE WEIGHT RATING	CARGO CARRYING CAPACITY	FRESH WATER CAPACITY (INCLUDES WATER HEATER)	GREY WASTE WATER CAPACITY	BLACK WASTE WATER CAPACITY
23MRB	25' 11"	96"	127"	78"	5,135	650	6,500	1,365	48	30.5	30.5
24MBH	27' 9"	96"	127"	78"	5,415	610	6,750	1,335	48	30.5	30.5
24RDB	26' 10"	96"	131"	81"	5,315	535	6,750	1,435	48	30.5	30.5
24RKS	28' 9"	96"	131"	81"	5,245	660	6,500	1,255	48	45*	30.5
25BHS	29' 5"	96"	131"	81"	5,860	690	7,250	1,390	48	30.5	30.5
27DSRL	31' 5"	96"	131"	81"	6,040	685	7,500	1,460	48	30.5	30.5
27RBOK	31' 5"	96"	131"	81"	6,010	710	7,750	1,740	48	45*	30.5
28BHKS	32' 11"	96"	135"	81"	6,675	765	8,500	1,825	48	53*	30.5
28DSBH	32' 9"	96"	131"	81"	6,115	680	7,500	1,385	48	45*	30.5
28RBKS	31' 11"	96"	131"	81"	6,285	760	7,950	1,665	48	53*	30.5
29REKS	33' 9"	96"	134"	81"	6,965	785	8,500	1,535	48	61*	30.5
30RDS	35' 3"	96"	134"	81"	6,620	755	8,500	1,880	48	61*	30.5
31BHBS	35' 11"	96"	134"	81"	7,150	755	8,950	1,800	48	45*	30.5
31RLKS	36' 11"	96"	136"	81"	7,435	855	8,950	1,515	48	30.5	30.5

*Split Tank

Unloaded Vehicle Weight (UUV): Sometimes referred to as "Dry Weight," UUV means the typical weight of this trailer as built at the factory. The UUV, as used in product literature and other promotional materials, does not include cargo, fresh water, propane, options or dealer-installed accessories.

Gross Vehicle Weight Rating (GVWR): GVWR means the maximum permissible weight of the trailer, including the UUV plus passengers, personal items, all cargo, fluids, options and dealer-installed accessories. The GVWR is equal to or greater than the sum of the UUV and the CCC.

Cargo Carrying Capacity (CCC): CCC means the maximum weight of all passengers, personal items, food, fresh water, propane, tools, other cargo and dealer-installed accessories that can be carried by the trailer. CCC is equal to or less than GVWR minus UUV. The addition of options will decrease the CCC.

Hitch Weight (HW): The hitch weight, as used in product literature and other promotional materials, does not include cargo, fresh water, propane gas, options or dealer-installed accessories. The addition of these types of items will either add to or subtract from the stated hitch weight.

It is important for your safety and enjoyment that your tow vehicle be adequately sized and equipped to tow and handle the GVWR of the RV you select. Review weights and rating of your tow vehicle and consult a competent advisor for questions or advice. Whether you are new to RVing or a veteran, get a feel for the performance of your tow vehicle before heading out on the roadways. When you tow an RV, you must drive differently than when you drive a single vehicle. Practice hooking up, driving, backing up and braking in a safe environment or seek out professional instruction. Jayco affixes a weight label to each RV which lists weight information for that vehicle. See specifications chart above.

STANDARDS AND OPTIONS

CUSTOMER VALUE PACKAGE (mandatory)

13,500-BTU A/C

Spare tire and cover

Microwave

6-gallon gas/electric auto-ignition water heater

ABS propane bottle cover

Bath skylight

Outside shower

Oven

Tub surround

Aluminum rims

Power awning with LED light

Electric tongue jack

Galvanized steel, impact-resistant wheel wells

Slideout rooms with double seals, barrier sponges and U-channel drip spouts

Black tank flush system

30-amp service

Dual 20-pound propane bottles with auto-regulator

Solar prep

Stabilizer jacks with sand pads (4)

Rear camera backup prep

Keyed-Alike™ lock system

Full-height hanging wardrobes with adjustable shelves

Solid-wood door enclosures for master bedroom (n/a on 23MRB, 24MBH, 24RKS)

Fixed bunks with 110V outlet and corner shelf

Teddy bear soft-touch bunk mats

Bathroom medicine cabinets

Porcelain foot flush toilet

DiamondFlor® vinyl flooring with cold-crack resistance

High-output Atwood auto-ignition furnace with wall thermostat

STANDARD INTERIOR EQUIPMENT

Solid hardwood jointed cabinets with screwed-and-glued lumbercore cabinet stiles

Overhead cabinetry with smoked-glass and bead board inserts

Large residential countertops

Deep split-bowl acrylic sink with high-rise, pullout faucet and sink cover

6-cubic-foot (24RDB, 25BHS, 28BHKS, 28RBKS only) or 8-cubic-foot Norcold® refrigerator with magnet-friendly front panels

3-burner, 9,000-BTU range

Decorative backsplash

Ball-bearing drawer glides with 75-pound capacity

Arched interior ceiling (n/a on Murphy bed models)

LED lighting throughout

Directional and closeable central A/C vents

24-inch or 32-inch LED TV (model specific)

AM/FM/CD/DVD/Bluetooth® stereo with speakers

Tri-fold sofas (n/a on 24RDB, 24RKS, 25BHS or Murphy bed models)

Booth dinettes with removable storage tote(s) underneath

Plywood dinette, bunk and bed bases

Wood grain accent paneling on select interior walls

60-inch x 80-inch queen beds with built-in storage totes (60-inch x 74-inch in Murphy bed models)

Jayco-exclusive pillow-top Simmons® mattress with bedspread

OPTIONS

Customer Value Package with 15,000-BTU A/C

Ledgestone fireplace with 40-inch LED TV (29REKS only)

Entertainment center with fireplace

Kitchen skylight with shade

Solid-surface kitchen countertops

Solid-surface kitchen countertops with island or peninsula (model specific) (24RDB, 25BHS, 28BHKS, 28RBKS, 29REKS)

Freestanding table with 4 chairs in lieu of booth dinette (select models)

Second 13,500-BTU A/C in rear bedroom (select models)

50-amp service with second A/C prep (select models)

30-pound propane bottles

2-bike carrier rack (A-frame mounted)

Glacier Package: Astro-Foil™ insulation added to main floor, slideout room floor and roof

Power stabilizer jacks

5-way power remote (select models)

8-way power remote (select models)

Front molded cap with LED headlights (n/a on 23MRB, 24MBH)

Chil N' Stor exterior refrigerator (n/a on 23MRB, 24MBH)

Exterior folding table (2-feet x 4-feet) in pass-through storage

Outside bumper-mount grill

Roof ladder

EZ Breeze™ power roof vent (location varies by model)

STANDARD EXTERIOR EQUIPMENT

Aerodynamic, rounded front profile with front diamond plate

Deluxe graphics package

TuffShell™ vacuum-bonded, laminated side, rear and front walls (including slideout room walls)

Magnum Truss™ Roof System with seamless DiFlex II material

5/8-inch tongue-and-groove plywood-decked flooring

Fully enclosed underbelly

Norco® NextGen frame with integrated A-frame

Frameless, G20 dark-tinted windows

30-inch friction-hinged main entry doors (most models)

Swing-out grab handle

Exterior TV bracket with 110V and cable outlets

Outdoor camp kitchen (23MRB, 24MBH, 25BHS, 27RBOK, 28BHKS, 28RBKS)

Slamatch™ on front pass-through storage doors

Marine-grade exterior speakers (2)

Radial tires

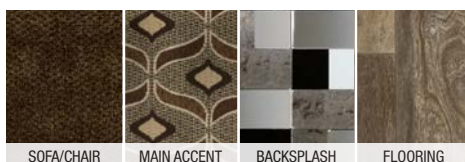
Tracker-Wide™ axles with Super Lube™

INTERIOR DÉCOR

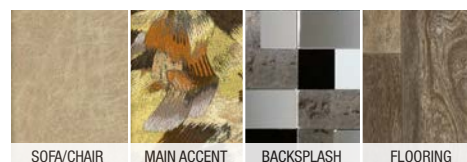
SHADOW



CANYON



TWILIGHT



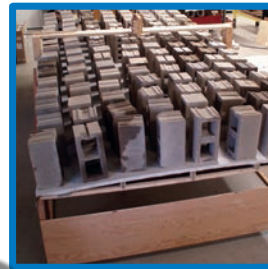
MAKING MEMORIES

THAT LAST GENERATIONS—LET'S JAYCO



Whether you're out for excitement, relaxation or just time together, we take steps others don't to help you stay focused on the fun. No cutting corners here. Let us go the extra mile so you don't have to.

JAYCO'S ROOF **VS** OTHER ROOFS



4,500 POUNDS ON A JAYCO ROOF VS. OTHER ROOFS

THE MAGNUM TRUSS™ ROOF SYSTEM

50 percent stronger

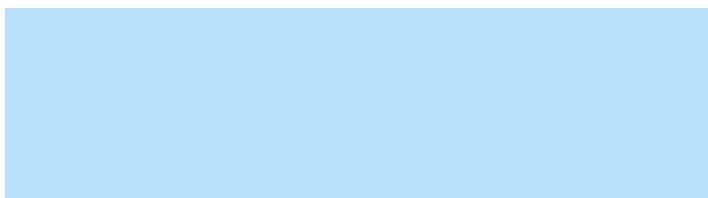
THE JAYCO DIFFERENCE

- 1. Main walls and slideout walls are vacuum-bonded** for 15-18 minutes using 144 tons of pressure to ensure a strong bond
- 2. Seamless DiamondFlor® vinyl**, laid over a 5/8-inch tongue-and-groove plywood floor deck, stands up to family foot traffic and withstands cold, cracks and scratches
- 3. Lightweight materials and aerodynamic profile** for easier towing
- 4. Extra-wide corner seals** on doors and windows to prevent leaks

- 5. Magnum Truss Roof System** withstands 4,500 pounds—50 percent more than other roofs
- 6. 3/8-inch roof decking** secured at every seam
- 7. One-piece, sidewall-wrapped DiFlex II** material provides the ultimate in leak protection
- 8. Norco® NextGen frame with integrated A-frame** prevents the hitch from buckling



Meet your Jayco Dealer



We work hard—so you can play hard. From finding the perfect Jayco for your family to providing flexible financing options and full-service support, we're here to help.

Follow Jayco



Jayco, Inc., PO. Box 460, Middlebury, IN 46540, www.jayco.com See dealer for further information and prices. All information in this brochure is the latest available at the time of publication approval. Jayco reserves the right to make changes and to discontinue models without notice or obligation. Photos in this brochure may show optional equipment and props for photography purposes. RVs built for sale in Canada may differ to conform to Canadian codes. ©2016 Jayco, Inc. 274736 0816-75K. Printed in U.S.A.

Travel with Confidence

2
YEAR
LIMITED
WARRANTY

At Jayco, we build our RVs to handle every adventure, then back them with our industry-leading 2-year limited warranty. We, with support from our select partners, have you covered for **2 camping seasons**. That's **730 days**. You won't find a better warranty in the business, because the only strings we attach are those that deliver the ultimate in reliability. That's the Jayco difference. So go explore. We have the warranty that will follow you anywhere. For a copy of our 2-year limited warranty with complete terms and conditions, please contact your local Jayco dealer.

FREE
ROADSIDE
ASSISTANCE

A year's access to Coach-Net™—the country's largest RV emergency road service.



eco advantage™

Jayco's long-term commitment to generations of family fun

After five years of increased efforts to eliminate waste, conserve energy and increase recycling, we've come a long way in building RVs that are not only better for your family—but also better for the planet.

Learn more at Jayco.com/EcoAdvantage